

The Power of Multidimensional Analytics and Reporting

In today's volatile business environment business analysts, columnists, executives and management gurus are providing great advice on **"how to navigate, survive and even thrive" in this environment.**

Essentially, **their recommendations can be summarized in the following five key points:**

- 1. Visibility:** Assess the true picture of the health of your business.
- 2. Cash:** Make targeted cost cuts and shore up cash flow.
- 3. Innovate:** Look for opportunities to innovate, invest or gain competitive advantage.
- 4. People:** Motivate and empower employees to take action.
- 5. Now:** Act quickly to make an impact – to capture new opportunities or to find savings.

All practical guidance, but it all *hinges on visibility to analyze and report up-to-date information to make the right decisions – fast and cost effectively.*

Making decisions during this economic downturn is about trade-offs. But they aren't binary choices. It's not quite as simple as "yes or no" or "this versus that." It's not about cost cutting across the board, but about making the right cost cuts – looking at which product lines or markets are less profitable to shift investment into those with better potential. It's not about freezing all new initiatives, but about understanding which initiatives can make the biggest impact – not only in the short-term, but also to leapfrog ahead when the business climate improves. It's about looking at your business from a multidimensional perspective – **because business is multidimensional in nature.**

Converting your ERP data – finance, sales, operations, inventory, marketing – into dimensions or information about customers, products, market segments and geographies is key to answering the questions that need to be asked. In what Regions are you positioned competitively? Which Sales People are performing and Where? Who is taking away your Customers? How are you performing against Plan or Prior Year? Is one Region outperforming another? These, and dozens of others, are the questions that need to be answered in order to determine your current – and future health.

BI-Metrix's integrated Business Intelligence solution facilitates defining and creating multidimensional business cubes directly from any application for powerful yet simple reporting and analytics within Microsoft Excel. With no requirements for cryptic code, macros, long complex Excel formulas or even the need to understand the myriad of database tables and fields, business users have access to business information whenever and wherever they need it.



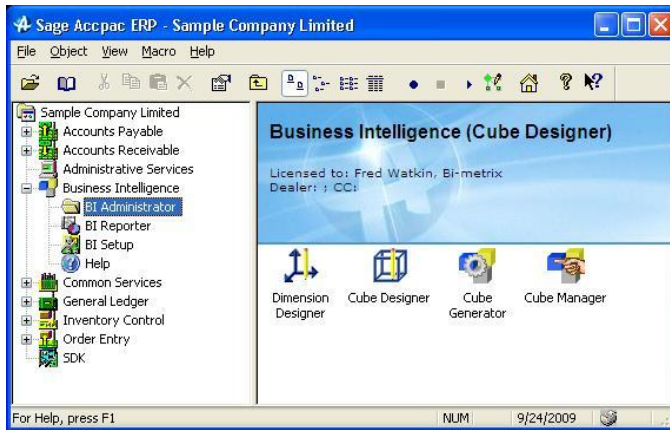
BI-Metrix connects people to information efficiently and effectively

www.bi-metrix.com

1100 Sheppard Avenue West, Suite 245
Toronto, Ontario, M3K 2B4
Tel: 416.477.2535, Fax: 416.398.7840
Toll Free: 1.877.820.7125

Integration ensures data quality for accurate reporting and analysis

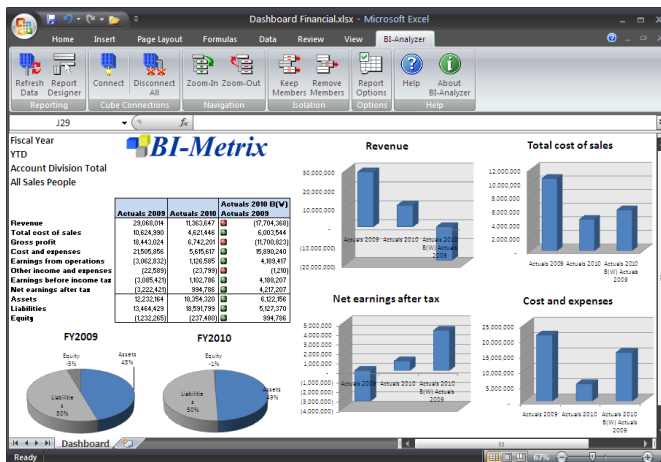
The importance of accessing quality business information is more critical than ever. BI-Metrix's financially intelligent business cubes ensure the right results are always delivered resulting in consistency, efficiency, more control and auditability.



Business users build cubes from any interface ensuring a single version of the truth

Enterprise analytics in the hands of business users

BI-Metrix's BI solution is designed for business users who need access to their trusted ERP data. The ease of use and a familiar Microsoft Excel environment translates into smaller learning curves and greater empowerment and self-sufficiency for end-user reporting and decision making. Intuitive and powerful analysis enables users to navigate the information in ways that make sense to them. They can isolate selected dimensions - accounts, products, segment, geographies - to create any style of financial or nonfinancial report.



Leverage all of Excel's graphing, formatting and conditional formatting to produce any style of reports

Cost effective

A simplified set-up reduces IT overhead and total cost of ownership - fewer components to install, easy roll-out. Our integrated solution leverages existing account structure, resulting in fewer maintenance costs. Full integration with your application and Microsoft Excel results in less dependence on IT and consultants to produce reports.