

## Benefits

- > Powerful analytics and reporting
- > Built for the business user
- > Designed for small and mid sized companies
- > Integrated with Accpac ERP
- > Single version of the truth
- > On-demand and trusted information
- > Low total cost of ownership

## Business Intelligence for Accpac

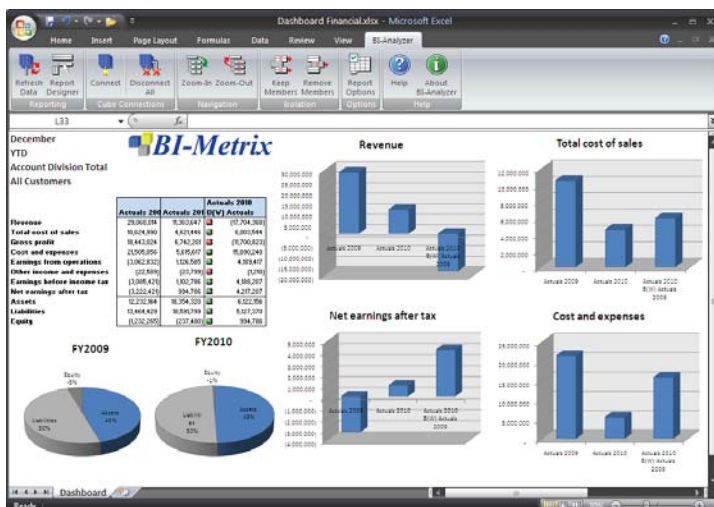
BI-Metrix's Business Intelligence for Accpac solution delivers the most in-depth analysis and reporting for Sage Accpac ERP. BI for Accpac combines the power of Excel and Accpac-aware cubes to facilitate business performance analysis and simplify report creation.

## Enterprise analytics in the hands of the business user

BI-Metrix's BI for Accpac solution empowers business users to easily and quickly build reports essential for effective decision making. Accpac-aware cubes are easily built directly from your Accpac database, without reliance on high powered users or IT.

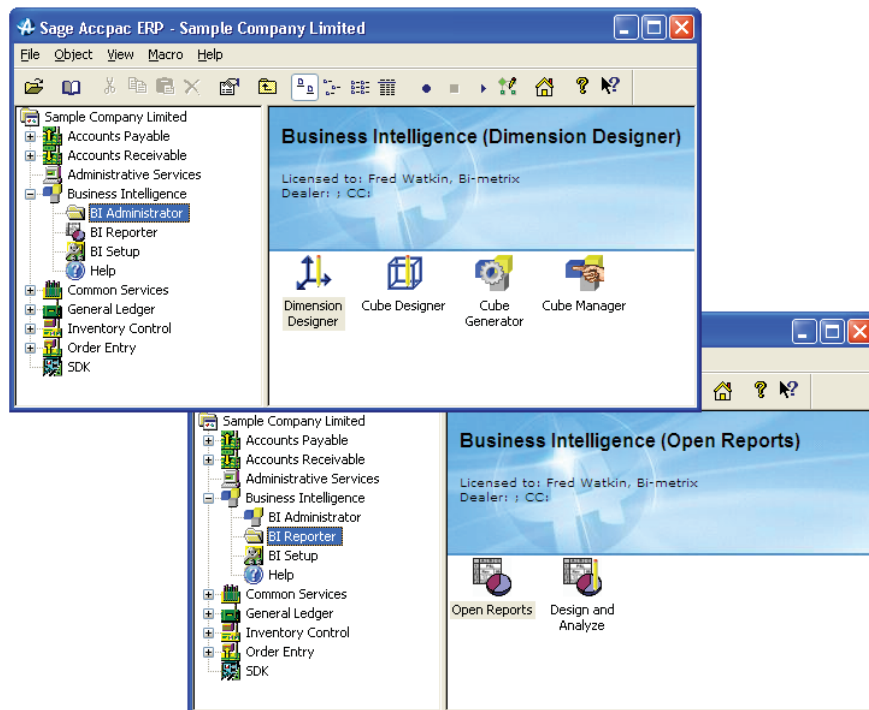
- no technical coding, no long complex formulas
- no need to understand the myriad of Accpac tables and fields

Dashboarding, business performance analysis, financial and operational reports are built in Excel's familiar spreadsheet environment. Using intuitive interfaces and simple mouse clicks, business users are able to slice-and-dice, drill down, graph, chart and examine information from different perspectives - by GL account, fiscal set, period, department, region, customer and other areas of their operation.



The screenshot shows a Microsoft Excel report titled "Standard Report.xlsx" with the BI-Metrix logo. The report is titled "Actual 2009 Revenue by Sales Person by Region". It features a table with columns for Monthly (January, February, March, Quarter1) and YTD (January, February, March, Quarter1). The rows list sales persons: Bill Bhalsson, Ronald Walters, and Rhonda Barnes, each with sub-rows for Eastern, Northern, Not Region Specific, and Southern regions. The table provides detailed revenue figures for each category.

	Monthly				YTD			
	January	February	March	Quarter1	January	February	March	Quarter1
Bill Bhalsson	481	(117)	300	664	481	344	664	644
Eastern								
Northern	15,329	264	2,388	17,992	15,329	15,584	17,992	17,992
Not Region Specific	141,457	171,401	17,814	330,673	141,457	312,858	330,673	330,673
Southern	222,629	489,214	33,481	745,324	222,629	711,843	745,324	745,324
Western		1,851	(44)	1,807		1,851	1,807	1,807
Account Region Total	379,896	662,593	53,950	1,096,439	379,896	1,042,489	1,096,439	1,096,439
Ronald Walters		1,717		1,717		1,717		1,717
Eastern								
Northern								
Not Region Specific	21,115	818	21,933	21,933	21,115	21,933	21,933	21,933
Southern	62,772	1,896	64,668	64,668	62,772	64,668	64,668	64,668
Western	436	351	787	787	436	787	787	787
Account Region Total	436	85,955	2,714	89,105	436	86,392	89,105	89,105
Rhonda Barnes								
Eastern								
Northern								
Not Region Specific	793	15,793	(127)	16,418	793	16,546	16,418	16,418
Southern	2,739	2,389	34	5,162	2,739	5,128	5,162	5,162
Western	6,598	24	6,622	6,622	6,598	6,622	6,622	6,622
Account Region Total	3,531	24,740	(89)	28,203	3,531	28,272	28,203	28,203



## Accpac ERP integration

BI-Metrix's BI for Accpac solution facilitates defining and creating multidimensional business cubes directly from a Sage Accpac ERP database. The user interface for defining the dimensions and cubes is integrated into Accpac and looks and feels like other modules in Accpac.

## Information anywhere at anytime

Cube files are portable self-contained OLAP databases that can be replicated and distributed easily. With cube files, users can analyze information anywhere and at anytime without online or network connections. Cube file technology allows companies to build multidimensional business models without the expense of owning and maintaining a multidimensional database.

## Cost effective

Reduce IT overhead and total cost of ownership through simplified set-up (fewer components to install, easy roll-out) and maintenance (single application for security and account structures). Full integration with Accpac ERP and Microsoft Excel results in less dependence on IT and consultants to produce reports.